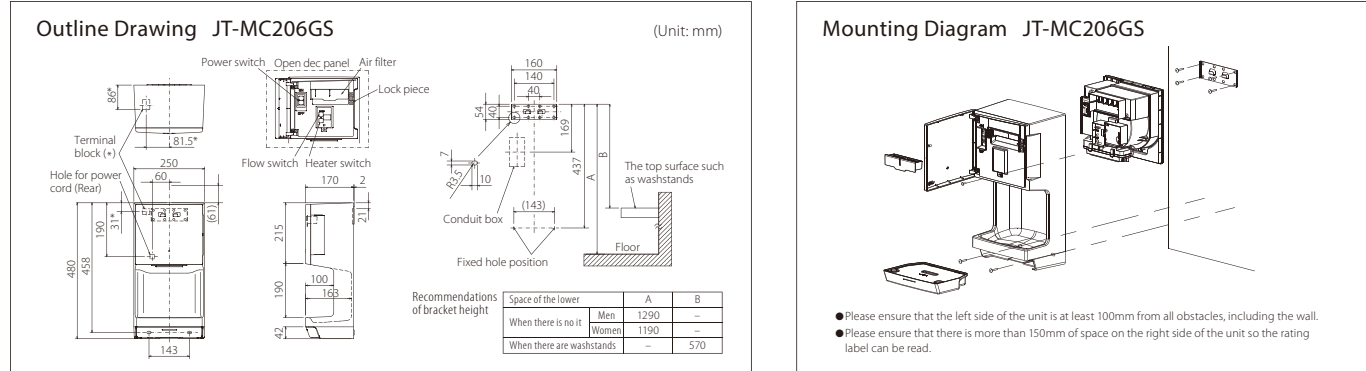


Mitsubishi Electric Hand Dryer

Specification

Model name	Power supply	Mode	Heater	Drying time (sec)	Airflow rate (m/s)	Air volume (m ³ /min)	Rated current (A)	Power consumption (W)	Standby power consumption (W)	Noise (dB)	Motor type	Safety components	Power cord	External dimensions (mm)	Weight (kg)	Drain tank (L)
JT-MC206GS	220~240V 50~60Hz	High	ON	13~15	140~150	1.2~1.3	3.4~3.5	735~825	0.5	62~64	Commutator motor	-Thermal fuse -Overcurrent breaker	None (Terminal block connection)	Width: 250 Depth: 170 Height: 480	5	0.6
			OFF			2.1~2.3	390~455									
		Low	ON	24~27	90~100	0.8~0.9	2.2~2.4	475~560								
			OFF			1.5~1.7	175~220									



New Slim Series Jet Towel

Matches Various Sanitary Requirements, Recommended for Everything

Model:
JT-SB216JSH
(w/heater)
220~240V/50~60Hz
White, Dark Gray, Silver

JT-SB216KSN
(w/o heater)
220~240V/50~60Hz
White

Mitsubishi Electric Corporation's Nakatsugawa Works is an ISO certified plant, having obtained both ISO 9001 Quality Management System and ISO 14001 Environmental Management System certification.

Mitsubishi Electric Hand Dryer website <http://www.mitsubishielectric.com/bu/handdryer/>

[MITSUBISHI ELECTRIC Regional Branch]

[Dealer]

MITSUBISHI ELECTRIC CORPORATION
HEAD OFFICE : TOKYO BLDG., 2-7-3, MARUNOUCHI, CHIYODA-KU, TOKYO 100-8310, JAPAN

For Europe

MITSUBISHI ELECTRIC
Changes for the Better
HAND DRYER

for a greener tomorrow

Mitsubishi
Electric
Quality

Jet Towel



NEW Jet Towel Mini

Compact body, yet powerful and user friendly
Installation is simple and easy – Fits anywhere

For the Environment
No Wastepaper

For Corporate Management
Cost Reduction

For Building Management
Easy Maintenance

For Customers
Improved Service

<http://www.mitsubishielectric.com/bu/handdryer/>

Square-shaped design saves space while ensuring a spacious hand-drying zone



NEW Jet Towel Mini

- Low Running Cost ¥10/130 uses
- 13-15s Quick-Drying Airflow 140m/sec
- Quiet Operation 63dB
- Antimicrobial Treatment
- Designed for Alcohol Cleaning
- Independent air ducts
- Heater
- Power Control Switch
- Disabled Friendly

Hygienic, comfortable drying action suitable for all ages

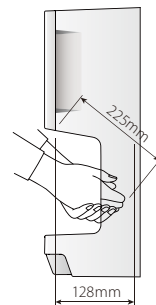
POINT1 Compact Yet Spacious and Easy to Use



Spacious hand-drying zone

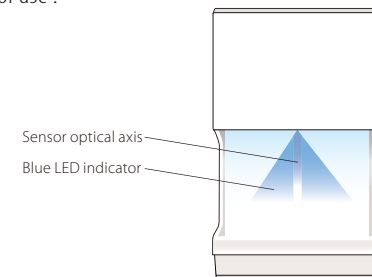
The hand-drying section is wide for easy use by people with large hands. Hygienic touch-free operation enables drying hands up as far as the wrists without touching the unit.

- ① Distance between nozzle in hand-drying section and backside is 128mm.
- ② Hands can be inserted up to a depth of 225mm.



Range sensor and blue LED indicator adopted for comfortable drying

A blue light indicates the hand-drying section when hands are inserted, contributing to ease of use.



POINT2 Easy to Clean and Hygienic

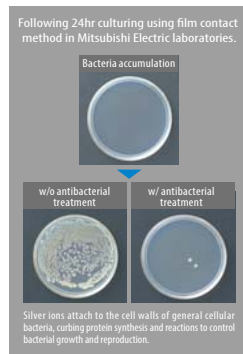


Integrated unit ensures simple maintenance

The one-piece design with the sensor window integrated into the hand-drying section and minimal joints in the body prevents the accumulation of grime and is quick and easy to clean.

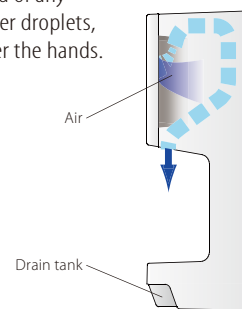
Antimicrobial treatment/Alcohol-resistant resin

All parts that come in contact with water, such as the hand-drying section, drain tank and drain ducts, have been treated with an antimicrobial agent, and an alcohol-resistant resin has been adopted for enhanced hygiene.



Independent air-duct system

The intake-air duct and airflow route are isolated from water drainage route to ensure that only fresh air, void of any residual water droplets, is blown over the hands.

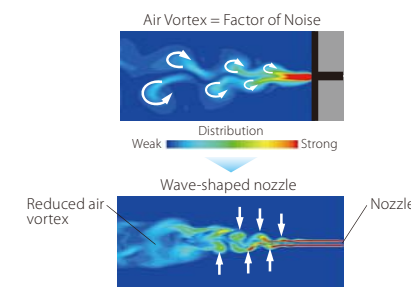


POINT3 Exceptional Low-noise Operation and Energy Savings



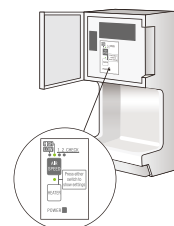
Comfortable low-noise operation

High-speed drying and low-noise operation have been simultaneously achieved using an advanced wave-shaped nozzle and innovative flow control technology.



Multipurpose operation mode selection

Choose from two operation modes selectable using the power control switch (easily set using LED display). Operational parts are installed in the body and a lock function is incorporated to prevent tampering.



Installation Flexibility Ensures Easy Adaptation and Use at Various Facilities

SCENE1 Restaurant restrooms



The compact size enables space savings in tight quarters. Install at the side of the sink basin to prevent water from spilling to the floor, always keeping the restroom clean.

SCENE2 Office restrooms



For restrooms with multiple sinks, installation between sinks is recommended. The square-shaped design matches well, and multiple units help to ease congestion and create an enhanced impression of cleanliness.

SCENE3 Hospital and nursing home restrooms



Installed immediately next to the sink at a height accessible by people confined to wheelchairs, hand drying is quick and easy, preventing water from being spilled on the floor and improving cleanliness and safety.

SCENE4 Children's restroom at commercial facilities



In addition to having a wide, child-friendly hand-drying zone, the unit can be easily installed at the optimal position and height for children's restrooms.

Management-pleasing Low Running Cost

Use more, save more!

Monthly expenses are limited to a small electricity fee (use of JT-MC206GS 130 times is a mere 10 yen). Eliminate the cost of replenishing/replacing paper towels or rolled cloth towels once and for all. The longer you use it, the more you will save!

Visit the website below to run a cost simulation
<http://www.mitsubishielectric.com/bu/handdryer/>

Uses per day	50 uses	100 uses	200 uses	300 uses	400 uses
Paper towels	2500	5000	10000	15000	20000
Cloth-roll towels	3750	7500	15000	22500	30000
JT-MC206GS Heater on Electricity cost per month	98	188	368	549	729

Calculation conditions
 *Used 25 days per month
 Jet Towel: Heater on for 15sec. per use; Constantly on (1 day=24hr; 1mo = 30d); Electricity cost of (¥) 21 yen/kWh
 Paper towels: Paper cost of (¥) 1 yen per sheet; 2 sheets per use
 Cloth-roll towels: Rental fee of (¥) 600 yen per roll; 200 uses per roll